



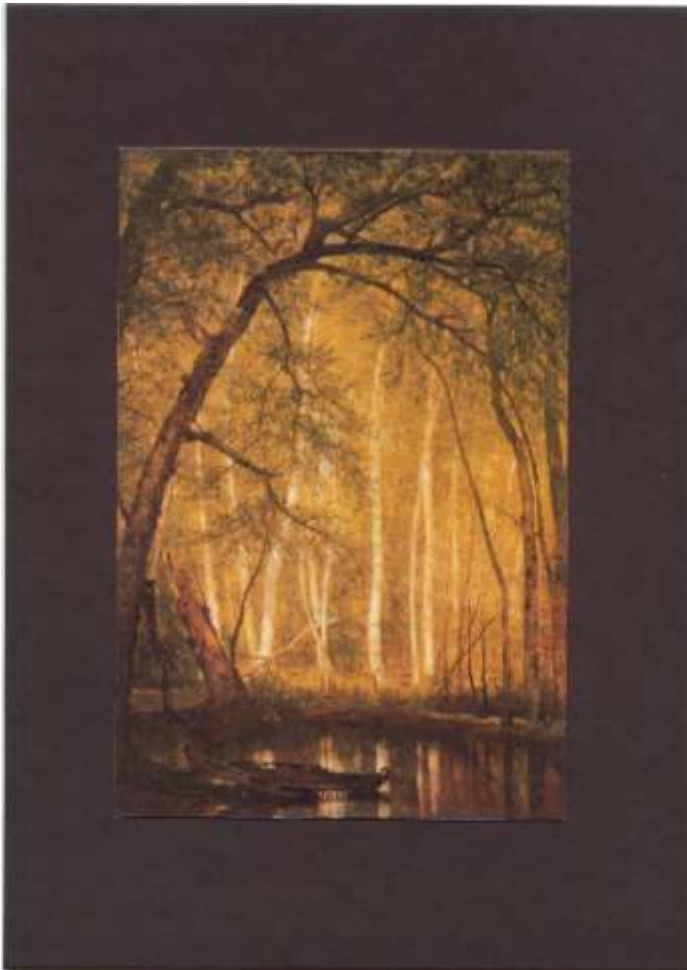
From the desk of Pierre Beaudry



MIND AS THE RECIPROCAL OF THE UNIVERSE

(Or the triple function of an axiomatic change)

by Pierre Beaudry, December 3, 2012.



“When I was a child, I talked like a child; I thought like a child, I reasoned like a child. When I became a man, I put the ways of childhood behind me. For now we see only a reflection as in a mirror darkly; then we shall see face to face. Now I know in part; then I shall know fully, even as I am fully known.”

Saint Paul, Corinthian 1, 13.

“You have to violate the hell out of popular opinion!”

Lyndon LaRouche.

Figure 1. *The Old Hunting Grounds*, 1864, by Thomas Worthington Whittredge. (1829-1910) Looking at nature as a drama on the stage of your imagination.

1. MAN LIVING AWAY FROM THE EARTH WITHOUT BEING THERE!

“Then you have another kind of creativity, which no animal has: True creativity, to create a new species as an act of will. Now, the new species may be you. You may have been born already, and you’re about to be reborn – that’s not the way it’s put in some of the fundamentalist churches, but there is a higher method that actually does produce something, that you become part of a species, a human species, which is more powerful in creativity than the previous state of the human species. In other words, a transformation in the qualitative ability of the human species to survive and to exist, as no other known species can do! Except by being transformed into a different species of a higher order.”

Lyndon LaRouche

Sometimes I wonder why God bothered to give human beings a mind, because even with a manual on how to use it, very few people have learned how to make it work properly. The reason for this failure is due to the fact that people are afraid to upset the gods by breaking the rules of the game. “If you have any ideas, keep them to yourself, keep your nose clean, and don’t make waves.” That’s the rule. As a result, people become peons in a system of propitiating relationships where everybody paralyzes everybody else by lying to one another in what they call “being polite.” Then, society breaks down because everybody thinks that if they break the rules of politeness, they will jeopardize their personal future. The irony of this process is that if you don’t break the rules and make waves, you have no future! Think of it as a near death experiment.

People simply don’t realize that if they were to break those stupid rules, they could discover that the power of their minds is not only similar to that of the universe, but that the human mind has already been created to act as the reciprocal to the mind of the universe as a whole. How come? Because the principles behind the two are not hidden at all and are very similar in all aspects of creativity. For example, Whittredge’s painting; *The Old Hunting Grounds* (**Figure 1**) is one of the most beautiful metaphors showing how the human mind and nature are similar in how they are generated. In a nutshell, all you need to know about reciprocity between yourself and the universe is encapsulated in *The Old Hunting Grounds*. As if it were depicting a scene from a Shakespearean moment on the stage of your imagination, nature displays the remains of Chingachgook’s canoe as reflected through the holes of the missing birch of memory what is left of James Fenimore Cooper’s *The Last of the Mohicans*.

In his writing on the beryl lens, or the mind’s looking glass, Nicholas of Cusa posed a similar dilemma: “*How does your intellect free itself completely from your sense perception with which it is associated?*” (Nicholas of Cusa, [*De Beryllo*](#), translated by Jasper Hopkins, The Arthur J. Banning Press, Minneapolis, 1998.) With the landing of the Curiosity rover on Mars, this question of “out of body experience” became immediately relevant because, since that event, man has definitely begun to separate his intellect from his sense perception as a matter of necessity, and this is the reason why Curiosity has opened an era of permanent presence of the human mind in the universe, which represents a new step in the advancement of the human species, that is, a new state of existence that is different from everything

else that the human species has experienced before. This actually proves that the mind and the brain are two very different things, but that the galaxy and the human mind have similar curvature.



Human beings can now mentally live permanently in extraterrestrial space without having to be there physically, and without having to resort to science fiction, or other counter-cultural stimulants. This realization involves a new discovery about the nature of man and about the nature of the universe, which is that both are reciprocally proportional and that man can now begin to know the truth about himself as the truth of how the universe knows him.

Figure 2. Self-portrait of Mars rover Curiosity. (*Le Figaro*)

This new era of extraterrestrial communication is only the beginning of a unique journey of the human mind into the domain of an efficient reciprocity between man and the universe; that is, more specifically, between the human mind and the mind of the universe. This is where a new form of communication has begun to operate at the speed of light and has brought mankind as a whole, a step closer to a telepathic way of communicating universally in a new form of simultaneity of physical eternity. In other words, Curiosity has brought about a permanent new form of existence which has now the power to change the universe as a whole.

This new form of communication is based on two important recent discoveries. The first was discovered by Los Alamo plasma physicist, Anthony Peratt, about twenty five years ago, the second was originally made by DAPRA computer scientist, Vint Cerf and others, a few years ago and was applied in late October of 2012 by a team of NASA and ESA astronauts using what is called Disruption Tolerant Networking (DTN). Both discoveries are related and reflect similar epistemological conditions that very few human beings are familiar with, and which must be understood from the standpoint of what I would call the economics of reciprocity. That's a new form of the old economics of generosity initially developed by Charlemagne.

This does not mean that the principle underlying these two discoveries did not exist in our universe prior to their discovery by human beings. It has existed since the beginning of time, because it is the universe which has created man and not man who has created the universe. That principle has been reflected differently at different stages of the universe's evolution as a principle of proportional reciprocity by means of which man can now command the universe to change, and the universe must

respond in kind. Moreover, everything seems to indicate that the universe is presently historically ready to receive such a command.

On the other hand, the present state of affairs among human beings on this planet doesn't seem to be ready for this new form of communication, because most humans are based entirely on the exclusive intention and motivation of self-interest, which is bringing us, today, to the near self-destruction of the human species. This culture of self-interest is deadly. Simply by observing the behavior of human beings and their governments of the western world through the beryl lens of Nicholas of Cusa, a visitor from outer space would be totally convinced that human beings are nothing but a bunch of greedy, selfish, and deceitful people who will resort to any means such as bullying, lying, cheating and stealing, in order to gain an advantage over other people. Thus, it is high time to protect humanity against the danger self-interests: they are nothing but asteroids bombarding the human mind.

Furthermore, such an extraterrestrial visitor might also come immediately to the conclusion that such a behavior is not only infantile, but that unless this apparently intelligent species were to change its ways, it would soon be heading for extinction, since the only way that man could survive in the future would be to become an extraterrestrial species, which requires precisely the opposite behavior for its survival; that is, proportional reciprocity. Why? Because our Plasma Universe was good enough to create such a relationship to mankind. But, in order to understand this idea, man must now see through the looking glass of Cusa, and use reciprocity as the lens adjuster. Remember that it took Ole Roemer a whole year and two experiments at six months distance to establish communication with Jupiter at the speed of light, while today, we can do it with Mars within 8 minutes, 4 light minutes each way.

What is remarkable with reciprocity is that it is an economic concept which is not based on self-interested benefits, but on altruism and love of the human species as a whole (*agape*). Reciprocity does not seek gratification or its own improvement, because, as Saint Paul put it in *Corinthian 1, 13*, "Love is patient, love is kind. It does not envy, it does not boast, it is not proud. It does not dishonor others, it is not self-seeking, it is not easily angered, and it keeps no record of wrongs. Love does not delight in evil but rejoices with the truth. It always protects, always trusts, always hopes, and always perseveres." But, this does not mean you should not be nasty with the enemy of mankind.

The essential difference between economics of self-interest and economics of reciprocity lies in the level of maturity of the people involved. For instance, war is an infantile form of self-interested action, while peace is a mature form of social action, simply because peace is beneficial for the common good, and the common good is the sole purpose of reciprocity. Thus, reciprocity is naturally motivated by the common good and is not competitive, because it motivates people to respond to a perceived intention of interest for the future human species as a whole. In this sense, reciprocity is a principle which is intimately connected to the creative process of the mind, and therefore, gives rise to a higher motivation than purely material incentives.

In economic terms, this means that reciprocity is not competitive and needs no incentive because it is not based on reward seeking. All it needs is credit. In that sense reciprocity is not at all market oriented since its currency is creativity as opposed to money. Reciprocity is rather based on a credit form of general welfare economics which depends on centralized great projects such as NAWAPA, for example, whose purpose is to improve labor in harmony with the transformation and mastery of nature.

Reciprocity as opposed to self-interest is, therefore, the natural process of a society in progress; and this should have become obvious to all of western civilized person, since the assassination of J. F. Kennedy when the opposite started to take hold of western civilization and corrupt Americans with drugs and other the counter-cultural fantasies. So, why the hell can't people see this other side of things?

2. THE PLASMA UNIVERSE AND THE INCOMPLETED FUTURE

“The human mind always elevates itself like an airplane; never from the bottom up, always from the top down.”

Dehors Debonneheure.

One of the most exciting aspects of this new extraterrestrial measure of change is that the change itself is the new measure. And this kind of change was measured in a unique new form of physical simultaneity of eternity by Los Alamo plasma physicist, Anthony Peratt during the 1980's. The axiomatic conditions set by Peratt are precisely the ones that are required in order to fully master a new form of communication throughout our Plasma Universe.

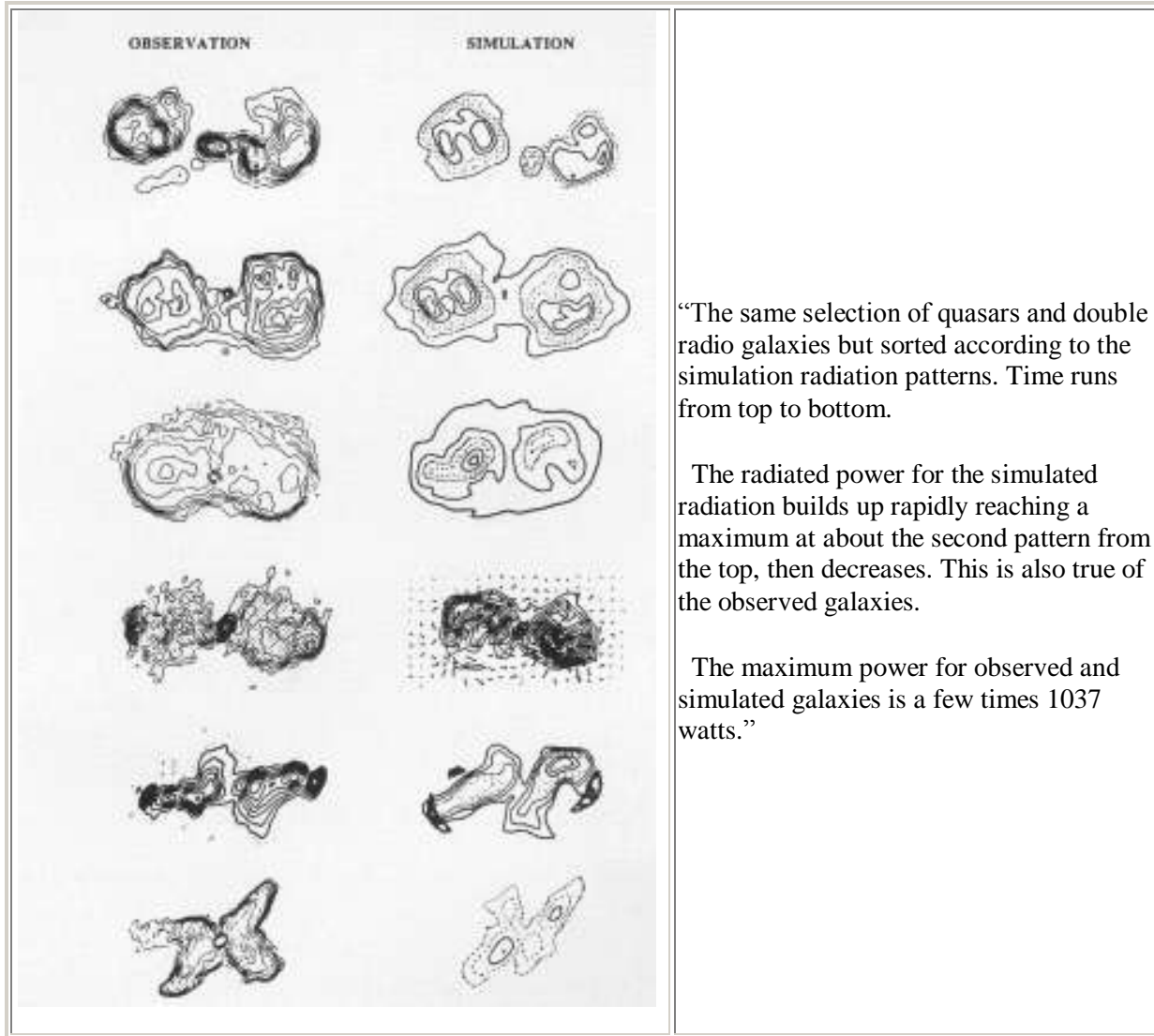
When I wrote my report on [*A Plasma Universe is a Matter of Mind*](#) in March 2012, I referenced Peratt's artistic-scientific irony of galactic proportion as a special form of reciprocity between the human mind, a laboratory experiment, and the Plasma Universe we live in; that is to say more specifically, that the reciprocity between snapshots of different representations of double radio galaxies and the physical-space-time function of the human mind are in synchronization with the simultaneity of physical eternity. This new time function becomes an important key to understand the proper use of Disruption Tolerant Networking (DTN).

During the 1980's Peratt developed a beautiful epistemological parallel between macrocosm and microcosm in our Plasma Universe. He compared the process of change during billions of years in the evolution of dual radio-galaxy with the different steps of a short-lived laboratory plasma, and he made the stunning discovery that the proportional time of development between the two were similar, which implied that both plasma phenomena were going through similar axiomatic changes within a similar proportional time-frame. If this is true, then Peratt demonstrated scientifically that Leibniz's monad was a true characteristic of the universe. However, the two plasma are similar not because they look alike in sense perception, but because they are generated by similar processes as in the human mind. This is why epistemologists should be interested in this discovery for obvious reasons. The development of the human mind goes through similar kinds of inversion processes in its own evolution as a species.

However, I must caution the reader against the trap of sense perception involved here. People will tend to look at galaxies and these computer simulations as visual “look-alikes,” and that is exactly the wrong way to look at them. The point of irony in Peratt's computer modeling is that the laboratory plasma simulations are not visual representations of huge galactic formations. If you think that, then you have been fooled. The irony is that the simulations of their respective formations are proportional and

reciprocal to the functioning of a universal mind in the simultaneity of physical eternity. That is the level you have to get at in order to master this new form of universal communication at the speed of light. Here is how Peratt summarized the process. See **Figure 3**. <http://plasmauniverse.info>.

“An isophotal comparison of the synchrotron intensities from quasars and double radio galaxies to the simulated interacting pinched plasma currents.”



“The concentric isobaric magnetic fields surrounding each plasma current produces a 'magnetic hole' or trap between the currents into which interstellar plasma is pushed. [...] While the high-energy-density plasma experiment lasts but for a billionth of a second, as plasmas scale in size and parameter, the scaled plasma morphology for a galactic dimensioned interaction is about 10 billion years.”

Figure 3. Comparative views between observations of galaxies and simulations of pinched plasma currents. <http://plasmauniverse.info/galaxy.Radio.html>

The beauty of the Peratt irony is that his optical imaging is not a visual sense perception but a mental composition which reflects time periods in billions of light years between the ages of different galactic formations (left) in proportion with the timing in nano-seconds of different moments of going through zeta-pinch plasma (right). The full irony is that the process relates the mind of man and the mind of the universe in the physical simultaneity of eternity, a reciprocity that is not accessible to sense perception.

The underlying question that Peratt addressed is that if the human mind and the plasma universe are reciprocal in their function of axiomatic change, it is because they leave the same footprints in proportional micro-physical-space-time as do galaxies in macro-physical-space-time. Therefore, the anomaly of his experiment is located in the fact that such double radio galaxies have the same axiomatic evolutionary behavior in the large as laboratory plasma and mental processes have in the small. That is precisely the way that a Leibnizian monad also develops. As Peratt explained:

“With the advent of three-dimensional electromagnetic particle-in-cell simulations, investigations of Birkeland currents have become possible in plasma not accessible to *in situ* measurement; i.e., in plasma having the dimensions of galaxies or systems of galaxies. The necessity for a three-dimensional electromagnetic approach derives from the fact that the evolution of magnetized plasma involves complex geometries, intense self-fields, nonlinearities, and explicit time dependence.” (Anthony Peratt, [*The Evidence for Electrical Currents in Cosmic Plasma*](#), IEEE, Vol. 18. No. 1, February 1990, p. 32.)

The point to be made, here, is not about the 3D-PIC simulation, because I don't want people to fantasize on high performance visualization, which is a trap. That is merely a useful instrument used in plasma simulation. The point that Peratt is emphasizing is the epistemological implications of geometry, self-field, and nonlinearity for the mind. Even though they are stated, here, merely in a formal and descriptive manner, these properties are the necessary epistemological conditions for a renaissance in science today; that is to say, for the purpose of a the triply-connected axiomatic change of the human mind, which implies: 1) a simultaneous time-reversal-congruence between the small and the large inside of one's mind; 2) a matter of mind which produces a high density of nonlinear singularities of axiomatic change; and 3) a complex Riemannian geometry which accounts for increases in energy-flux-density as Lyn specifies as the outcome of the process. That is what is required to unlock the door to a new renaissance in science today, and more specifically in fusion power and matter-antimatter processes as reciprocals of the human mind.

The reason why the younger generation does not have any sense of the future is because they are not thinking like this. They are not looking passionately for something that will change the power of their intellect, but rather to something which will satisfy their immediate sensual gratification. If they don't get a kick out of something, they are not interested. The time that is required for nourishing a future ideal of man that is just barely born does not satisfy them. They want their pleasure here and now, ready-made, and sometimes in the extreme. They will get bored if a project takes more than two weeks to complete; and they will give up on you if they have to wait for a longer period of time. As a result, the younger generation of today is incapable of recognizing a true revolutionary discovery of principle when they see one, because they have

suppressed the idea of change and of the future altogether. If you want to get out of this morass, I recommend that you look into your mind and ponder what Peratt is saying on his website: <http://plasmauniverse.info>.

The reader should note that the changes in the plasma configuration are proportional to changes in the human mind, that is, in proportion to the fact that it has abandoned a previous immature stage of development, has gone through a high density of nonlinear singularities, or instabilities, and has transformed a former state of existence by inversion through the heated function of a zeta-pinch, so that it became capable of reaching a new geometry that will generate a higher energy-flux-density throughout the universe as a whole. That's what the intention of this process is all about.

As for the outcome of the change, you don't know what it's going to be. You only know that something big and explosive is going to take place, which is going to make the previous form of existence disappear, because the previous axioms no longer apply. As for the zeta-pinch, it is the last pinch you are going to feel before you go into that inversion and everybody on this planet is going to feel it. That measure of change is truly Rabelaisian in character, and it goes together very nicely with what Lyn stressed, again recently, about having insights into the future.

What Lyn identified as the principle "of the uncompleted future" relates to the same mental experiment as that of Peratt's with the Plasma Universe, that is, the foraging into the future by an inquisitive mind who dares to go against popular opinion and internalizes what Cusa identified as "Learned Ignorance." That is what most young people, today, are incapable of internalizing, because they are essentially focused on their performance and on seeking approval. They look at knowledge as something that they must acquire in order to become accepted by the society they live in, and they play with ideas as if they were chasing butterflies. They don't look at the future of mankind as something that they have to master in order to survive. Lyn posed the problem in the following manner:

"So, to summarize the points which I have just presented: what is not precisely clear to me from this experience, is whether the lack of such a specific quality of insight into the future, is a manifestation of an inherently "genetic" effect, or the net effect of a special conditioning during childhood and beyond. I have no doubt that the "trait," as we might choose to identify it, is the expression of some relevant early onset of that quality (which it certainly is, usually), or the lack of such qualities of foresight is the result of crushing the noëtic potentials of the majority among children and adolescents early on. I strongly suspect the latter to be the case in point. I do know that customary rearing of children and adolescents, as I have observed it, tends to virtually "crush out of existence" the specific quality of future-insight which is relevant for this case. In my direct experience in such matters, parental households and schools are certainly largely to blame for the loss of the relevant qualities of foresight." (Lyndon LaRouche, *The Calamity of the Second Obama Administration*, November 9, 2012.)

So, unless a person has a “genetic” defect, the cause for this affliction is to be found in the social conditioning where the child gets caught up into a trap of propitiating the higher-ups for fear of not being accepted or of being beaten up. Unless the child sticks to what he knows to be the truth and takes the risk



of being punished for being obstinate about it, he will probably never be able to discover a universal principle, because his access to the future will have been thwarted by his propitiatory behavior to the past.

The typical trap that the child falls into, and out of which he is rarely able to pull himself from by his own means, is the fictitious web of neurotic fantasies that he gets caught into at home, as well as in school, between two sets of conflicting perceptions of himself. He enters into a conflict between the image others have of him and the image he wishes others would have of him, without realizing that he has sacrificed his true self and his reason in the process. If he is more concerned with being accepted than with being truthful to himself, he will become haunted by a high density of monstrous singularities and will probably never be able to have any insights into how to solve this conflict, because he will have become the slave of what others think of him. (Figure 4.) That poor child will grow up to live in the constant fear of not being up to what is expected of him.

Figure 4. Francisco Goya. *The Sleep of Reason Produces Monsters*. 1799.

Very early on however, the same child also has the opportunity to discover that most adults lie all of the time, and on the strength of that knowledge, he is able to hammer his character against the fear of being rejected, or even beaten up if he dares stick with the truth. In that case, that child can develop the power of foresight into the future and can easily develop the ability to make discoveries of principle. In doing that, he will also develop a self-critical ability to understand that what appeared impossible before, becomes possible after the zeta-pinch of reciprocity has caused an inversion of his mind on itself. That's the choice the present world strategic situation has to offer to children today. The irony, however, is that the treasure of one's true identity is hidden where you don't expect to find it: in helping others discover the power of their own mind. So, you seek to discover where the human condition is most susceptible to

change – the place where most people want to avoid – and that’s where you want to go. And the asteroids of obstruction that are getting in your way are merely the epistemological bullies that you have to avoid.

3. A NOTE ON SELF-REFLEXIVE RECIPROCITY-IN-TIME-REVERSAL

The key to successful leadership in the world is change, but the reason why there is a breakdown in leadership in our western societies today is because people don’t understand reciprocity-in-time-reversal. Most importantly, people don’t understand that time is cyclical, and unless the past is changed into an improved form of the future, it will be extinct forever. So, the point is that you cannot lead people to the future unless you change their past by time reversal, because by the time the wave of the future comes back around, nothing will have remained the same, and most of what existed before the cycle began will no longer be there. Therefore, the significance of understanding reciprocity-in-time-reversal is that mankind will become extinct unless there is progress with the whole of the human species.

For example, the Confucius principle of Tai Chi is based essentially on the golden rule whereby *“people should treat others as they would wish to be treated by them.”* However, this universal principle of reciprocity is not based on what popular opinion calls “mutual agreement.” That is too simplistic. The principle is rather based on mutual well-tempered change; that is, as Confucius (551-479 BCE) had established as this life-long principle of social conduct.

“Zi Gong asked, saying: ‘Is there one word that may serve as a rule for all of one’s life?’ The Master replied: ‘Is not RECIPROCITY such a word.’ ” (Confucius, Chinese Text Project. <http://ctext.org/analects/wei-ling-gong#n1504>.)

However, reciprocity is not only a principle for social conduct; it is also a universal physical principle of our Plasma Universe. For instance, anyone who knows how to work with a professional camera will tell you that reciprocity is one of the most fundamental principles of artistic photography.

The aperture size and shutter speed of a camera are proportionality based on reciprocity between the time and speed of light. In photography, reciprocity is defined by the proportionality between the speed of the shutter and the size of the aperture. One unit of increase in aperture corresponds to doubling the time of the shutter. Thus, light is increased or decreased proportionately by the function of this aperture/shutter relationship. The so-called Newtonian “inverse square law,” which is not a law at all, is another effect of the same reciprocity principle, because proportionality of reciprocity is dominated by the musical tuning at C-256 of the power of two as Leibniz demonstrated to be the basis for Tai Chi. See my report on [Fohi’s Noetic Characteristic of Change](#).

4. A NEW INTERPLANETARY COMMUNICATION NETWORK

“That's where the problem lies, is the blocking against the idea, that we are able to communicate to Mars, if there's something there that can receive our communication and {radiate a reaction}! In other words, the question is control. Can we control these processes? That's, I should think, what we're looking for. That's the whole purpose, if you want to get a space program, which man has never had before, not an active space program. It has to be reciprocal! How do you take Earth, where we speak a human language; Mars, where there is no human language, can the planets communicate? Well, give us a third choice. Where there's an interaction between Mars and Earth, and then an international with some other point, in the process. Now, you've begun to create a language. And it's creating a language, just like creating a musical language.”

Lyndon LaRouche, [Weekly Report for November 28, 2012](#).

The question that Lyn raised recently regarding the vicarious hypothesis and metaphor is based, as he said, on the understanding that the functional relationship between Cusa and Kepler is the foundation for both art and science. This is a question that is absolutely crucial to revisit from the vantage point of epistemology, because Cusa's so-called “mystical poetry” is what is required for a new form of universal communication today.

There have rarely been in the history of mankind two points of view that coincided so brilliantly on the horizon of the universal mind as Cusa and Kepler. And therefore, the work that has to be accomplished, in this matter of mind from the future, is impossible to realize without connecting with those two minds from centuries past, because they are the only ones who can help us clean up the biggest modern shit house in modern history; that is, the cleaning up of all of the mathematical crap that has been accumulated in European and American Universities since the Council of Florence. The work is so enormous that it can be compared with the Herculean task of cleaning up the Augean stables. But, we must discover the blockage which is preventing scientists from unblocking the nearby rivers that will help us sweep up this mess within a day or so.

So, the question is: how do we establish the appropriate sense of vicarious hypothesis and of metaphor to understand how to clean up this mess? Take the case of the recent application of the Curiosity communication system and apply it, as it must be, to the future of an interplanetary internet system communicating at the speed of light. What do you get? How do you apply this new form of communication for the purpose of preventing the threatened extinction of human life on Earth?

On November 8, 2012, NASA and ESA reported that they were collaborating with each other in an experimental interplanetary internet by controlling an educational rover on earth from the International Space Station orbiting around the Earth. According to the NASA space communication chief, Badri Younes, “The demonstration showed the feasibility of using a new communication infrastructure to send commands to a surface robot from an orbiting spacecraft and receive images and data back from the robot,” <http://www.zdnet.com/nasa-and-esa-test-interplanetary-internet-protocol-using-lego-robot-7000007158/> In her press release, NASA reporter Rachel Kraft stated:

“The experiment used NASA’s Disruption Tolerant Networking (DTN) protocol to transmit messages and demonstrate technology that one day may enable Internet-like communications with space vehicles and support habitats or infrastructure on another planet.” (http://www.nasa.gov/home/hqnews/2012/nov/HQ_12-391_DTN.html)



Figure 5. Sunita Williams on the Space Station.



Figure 6. The LEGO robot of ESA.

The experiment proved successful when “Space station Expedition 33 commander, Sunita Williams, used a NASA-developed laptop in late October 2012 to remotely drive a small LEGO robot at the European Space Agency centre in Darmstadt, Germany. The European-led experiment used NASA’s DTN to simulate a scenario in which an astronaut in a vehicle orbiting a planetary body controls a robotic rover on the planet’s surface.” The experiment not only demonstrated how to command the robot through a laptop computer on a satellite, (**Figure 5**), but also how the technology could be used from Earth’s orbit to Mars’ orbit using satellites as relay stations. This shows you what happens when a new measure of communication that is turned completely toward the future is brought into consideration.

The point is that it is Cusa’s beryl lens that is the required measure in communicating with Mars, which can demonstrate how man is now able to measure change at the speed of light between planets or between a planet and a spaceship as opposed to simply measuring distances through sound waves as we have been doing on Earth since the beginning of time. For the first time in human history, therefore, a new mode of optical communication has established a new function between man and the universe

outside of the former boundary limitation of the Earth, a function which calls for the solution to the paradox of the unity between microcosm and the macrocosm.

The point to be made is that the former flat-Earth way of communicating has been buried since the advent of Curiosity and man can now extend his mind to the expanse of the universe without leaving the Earth, and therefore, extend his cognitive powers over the universe as a whole at the speed of light. This new optical communication system is no longer made for and from the standpoint of sense perception, but solely for and from the future of the creative mind. In that sense, this is a new epistemological platform where man must now live at the axiomatic limit of communicating with himself across the universe without having to be there physically, and in the mode of the simultaneity of physical eternity.

The most crucial problem to be resolved, however, is how to communicate in a manner that is free of the oligarchical principle of control. As Lyn emphasized, this new form of communication is no longer measured by clock-time, but by time-reversal from the future, which means that DTN must be understood as a nonlinear form of communication created for the purpose of forecasting. As Lyn put it:

“Now, the importance of Mars is, that the examples of Mars, and the practical considerations we have in relationship to Mars, now, as these will increase presumably, if the world doesn’t go to hell in the meantime, it that, it forces us, to recognize, by the problem of the speed of light involved, it forces us to recognize that the idea of time, as such, is not clock-time. It’s not sense perception clock-time, it’s quite different. And it’s very efficient! Events will occur in the future; for us, in the future, say, at the difference of the speed of light, or even further.” (Lyndon LaRouche, *NEC Meeting, Saturday*, November 24, 2012.)

In other words, the old mode of communication in which “time is money” is no longer valid and must be trashed as early as possible. The new DTN system must therefore be understood and conditioned not to be practical, but to be essentially imaginative and based on a new credit system. In other words, DTN must be used to change the future and to change it before it takes place.

Just to identify a few aspects of how this new system has been functioning so far: NASA showed that the new system was part of the agency’s Space Communication and Navigation (SCaN) program and that it was “disruption tolerant” because it allowed for misconnections and errors in message sending at the speed of light between planets. For example, the work on the International Space Station requires that DTN assure communications in spite of physical obstacles. The NASA fact sheet on DTN reported:

“The problem of latency for interplanetary links is exasperated with increased BER [bit error rate] due to solar radiation. In addition, the celestial bodies are in constant motion, which can block the required line-of-sight between transmit and receive antennas, resulting in links that at best are only intermittently connected. Intermittent link connectivity is commonplace terrestrially as well. One example is the plethora of battery-powered mobile communications devices that go in and out of communication range to wired service interface points and are turned on and off at the users discretion.” ([Disruption Tolerant Networking for Space Operations \(DTN\)](#))

Thus, to avoid the maximum disruption in communication messaging, one must establish a multiple-hop network that satisfies the long-haul interplanetary links. Such a multiple-hop network, however, must be based on the principle of foresight as opposed to sense perception, leaping into the future as opposed to being submitted to the conditions of replicating the past. It is through such an interplanetary new outlook that one must now look into in order to be able to monitor and detect, for instance, dangerous interplanetary asteroids or comets that could threaten the Earth.

The Defense of the Earth should be made a primary and immediate consideration for the establishment of this new form of communication, and it should function along the principle of a second Peace of Westphalia. In this broader context, the idea is to use DTN as a means of controlling the entire network of interplanetary internet as a global economic platform of reciprocity for all of the peoples of the Earth. In other words, DTN must not be based on the same isolationist market-oriented protocol as the Internet. This problem will be resolved when the time comes where epistemological conditions of inevitable conceptual malfunctions in extraterrestrial communication are also included as part of the process of DTN.

The most interesting aspect of NASA's new SCan technology is in the light transmitting bundles of information through extended currents. The data is sent and received through light waves for long distance communication, that is, where lasers are used instead of radio frequencies. And, the insight required, here, must look to the principle of reciprocity involved in the transmission of light inside of transporting Birkeland currents. This means that what must be identified first is the range of the optical spectrum and the reciprocity between the transmitters and the receivers, or what are now called transceivers in all forms of terrestrial and extraterrestrial communications. Mankind must for ever more become a transceiver species whereby a transmission protocol of ideas is incorporated as a new application of the least action principle in the propagation of information files at the speed of light. Now look at Mars with the idea of Lyn on time.

In terms of clock-time, the time-frame of communicating with Mars is as follows: The minimum time lapse between Mars and Earth is about 8 minutes, that is, 4 light minutes each way, when the Earth is the closest to Mars, and the maximum is 20 light minutes when the two planets are in opposition. An additional problem is the time to prepare the delivery. The time to initiate a file transfer to a satellite around Mars might take up to an hour to prepare, even more, before the message is sent because of security clearance manipulations. Moreover, the orbiting schedule of our satellites around Mars only allows for a window of about ten minutes of communication per day, so, the easiest way to solve this problem is to increase the number of orbiting satellites and do the communication "through a hop-by-hop network" as Rachel Kraft put it: "While waiting for the next link to become connected, bundles are temporarily stored and then forwarded to the next node when the link becomes available." (http://www.nasa.gov/home/hqnews/2012/nov/HQ_12-391_DTN.html)

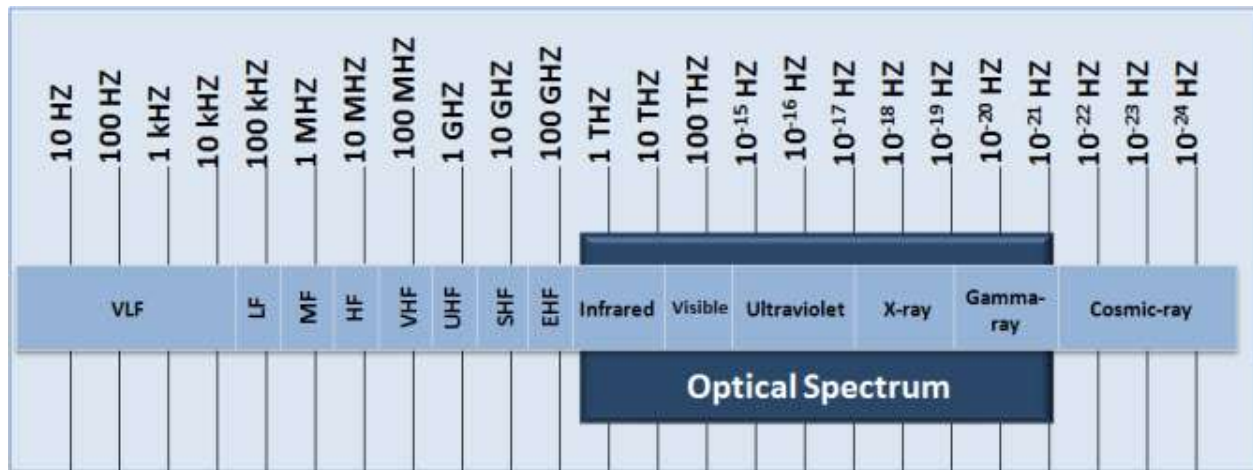


Figure 7. NASA. Optical Spectrum from Infrared to Gamma-ray.

So, if this is clock-time, what sort of time is Lyn talking about that is not clock-time? What time is it when your mind lives on Mars? What is Mind-Mars-time? Lyn’s time is the time to change, that is, the time it takes for humanity to grow up. And, that better be very, very soon, otherwise we are looking at human extinction within about an hour and a half from the start of thermonuclear war, and that is not the fusion process you want to end-up with. That’s what the Mind-Mars-time is about.

That is why the most important question that the DTN users have to face, right now, is how to define an efficient functional time-relationship with Mars outside of the framework of going along to get along with the practical mathematical professionals that are running the show. Mathematical technicians are not scientists and should not rule the laboratory like little gods of Olympus. Mars-time is the time to kick out the mathemagicians. Mars-time is the time to become nasty and start offending the gods and stop propitiating Aristotle and Newton. The usual Aristotelian or Newtonian way of measuring such an experiment from the vantage point of sense perception no longer works. Something completely different must take place in order for this new measure of communication to succeed.

The key is to start by eliminating the underlying assumption of the silly Newtonian inverse square law nonsense. This measure does not work because sense perception is not the basis for measuring anything. DTN requires that the measure be change, because the issue is no longer the measuring of a distance by clock-time-distance, but by measuring how many obstacles were avoided before the message got to its destination and that changes all the time. It no longer matters if you measure in Egyptian cubit, Roman sextarius, British foot, European Meter, or Chinese Si; you are no longer measuring sense perception things. What you now have to measure is the power of the mind to change. That’s what time it is.

As Nicholas of Cusa put it when he criticized Aristotle in his paper on the beryl lens, you cannot use the measure of the Emperor to understand the power of God. The measure of Aristotle was not based on reason, but rather on the will of the Emperor, and “What has pleased the Prince has the force of law.”

(Cusa Nicholas of Cusa, [De Beryllo](#), p. 815) So, this brings up the question: “What time is it when you replace the imperial measure with the *divine measure of change*, with the measure of human development, that is, with the measure of scientific progress for all of mankind from the future?” It’s time to have fun in being able to speak to ourselves from Mars without actually being there. And, the question is: How will Mars respond?”

FIN